

Dulux[®]

POWDER
COATINGS



DURATEC[®] X15

SUPER DURABLE ARCHITECTURAL ALUMINIUM POWDER COATING



Worth doing, worth Dulux[®].



DURATEC® X15

Duratec® was first launched in 1988, and has been used extensively in Australia, New Zealand and South East Asia. Dulux® offers over 20 stock colours chosen to compliment the appearance of commercial architectural features.

Duratec® X15 is suitable for:

- High Rise residential and commercial projects – equivalent to any class under the Australian Building Code,
- All major architectural developments irrespective of the height and most environments,
- Where AAMA 2604-05 performance is appropriate,
- When a 15 year colour and film integrity warranty is desired.

How to Specify Duratec® X15

To ensure there is no misinterpretation of what you want on your project the following information should be included in your specification.

- Specify the Dulux® "Product Name & Code" to meet,
- The AAMA standard required,
- To be applied by a Dulux® Registered Aluminium Applicator in accordance with AS3715-2005,
- Specify both the colour retention AND film integrity warranty period,
- If an alternative to the specified product is to be submitted, it must meet or exceed the AAMA standard and the performance criteria of the Dulux® warranty.

For example: "Duratec® X15" Eternity® Silver Kinetic™ 9007160K to meet AAMA 2604-05. Product must be applied by a Dulux® Registered Aluminium Applicator and must offer a 15 year colour and 15 year film integrity warranty."



green building council australia
MEMBER

Green Star® Rating

Independent chamber testing carried out by Foray Laboratories confirms Dulux® Duratec® X15 contributes towards satisfying credit IEQ-11 in the Green Star® Office Interiors, Rating Tool.

"Total Volatile Organic Compound Emission Rate: <math><0.01 \text{ mg/m}^2 \text{ /hr}</math> (7 days)"

When Duratec® X15 is used in the typical manner in an office building the resulting airborne total volatile organic compound concentration can be expected to be less than 0.5 mg/m^3 as specified by Green Building Council of Australia Green Star® Office Interiors IEQ-11"

Products are not reviewed or certified under the Green Star® rating system. Green Star® credit requirements cover the performance of materials in aggregate, not the performance of individual products or brands. For more information on Green Star®, visit www.gbca.org.au

Registered Applicators

Only Dulux® Registered Aluminium Applicators can purchase and apply Duratec® X15. Dulux® Registered Aluminium Applicators are issued with a 15 year colour and film integrity warranty, after demonstrating their capability to meet stringent quality conditions and international standards.

The importance of selecting an appropriate applicator cannot be understated. For a surface coating to provide maximum performance, the metal to be coated must be properly cleaned and prepared, the powder coating must be applied in accordance with Dulux®'s recommendation, and the coated metal thoroughly tested for quality assurance before being released for fabrication.

Each Dulux® Registered Aluminium Applicator has invested heavily in their business to guarantee their performance in preparing the premium finishes shown in this guide. Should you require details relating to Dulux® Registered Aluminium Applicators please contact your local Dulux® representative or visit the web at www.duluxpowders.com.au

Project Type, Environment & Specification

Specifying powder coatings that comply with an appropriate internationally recognized performance standard removes all doubt for the building owner, builder, fabricator and applicator. Standards spell out the level of colour performance and film properties required for a particular environment.

| PROJECT TYPE | ENVIRONMENT | STANDARD | DULUX® POWDER COATING |
|---|--------------------------|--------------|-----------------------|
| Prestigious Monumental Developments, irrespective of height. | Mild, Tropical or Severe | AAMA 2604-05 | Duratec® X15 |
| High Rise Commercial & Residential Developments, irrespective of height | Mild, Tropical or Severe | AAMA 2604-05 | Duratec® X15 |

| DURATEC X15 | | STOCK RANGE | | | |
|--------------|----------------------------------|-------------|-----|-----|-----|
| Product Code | Colour Name | LRV | R | G | B |
| 9007024Q | Eternity® Citi Silver Pearl Matt | 43 | 172 | 177 | 179 |
| 9007005F | Eternity® Star Pearl Flat | 38 | 163 | 166 | 167 |
| 9007160K | Eternity® Silver Kinetic Satin | 37 | 162 | 165 | 166 |
| 90089119 | Eternity® Natural Pearl Matt | 41 | 171 | 172 | 169 |
| 90088396 | Eternity® Pewter Pearl Satin | 26 | 137 | 141 | 141 |
| 90088395 | Eternity® Nickel Pearl Matt | 39 | 175 | 166 | 157 |
| 9001138Q | Eternity® Linen Pearl Satin | 77 | 231 | 227 | 248 |
| 90087728 | Eternity® Titanium Pearl Satin | 14 | 105 | 105 | 103 |
| 90088393 | Eternity® Bronze Pearl Satin | 10 | 99 | 89 | 75 |
| 90088394 | Eternity® Charcoal Pearl Satin | 6 | 70 | 68 | 68 |
| 9001110G | Zeus® White Gloss | 92 | 245 | 247 | 243 |
| 90084682 | Zeus® Talc Satin | 77 | 232 | 227 | 218 |
| 90073713 | Zeus® Chalk USA Gloss | 83 | 242 | 235 | 220 |
| 90088417 | Zeus® Lunar Grey Matt | 61 | 201 | 206 | 208 |
| 90051272 | Zeus® Silver Grey Matt | 48 | 183 | 186 | 186 |
| 90088416 | Zeus® Grey Satin | 20 | 121 | 124 | 126 |
| 90051275 | Zeus® Dark Grey Matt | 8 | 72 | 78 | 82 |
| 90087732 | Zeus® Charcoal Satin | 7 | 74 | 78 | 81 |
| 90087734 | Zeus® Lunar Eclipse Satin | 4 | 57 | 57 | 58 |
| 90088702 | Zeus® Black Matt | 4 | 59 | 59 | 60 |
| 9007315S | Zeus® Timberland Satin | 12 | 99 | 98 | 94 |



Duratec® X15 is available in the above range of standard stock colours chosen to compliment most architectural features. In addition, project specific colours may be matched on a made to order basis.

Some limitations do apply such as batch size, colour choice and technology. For more information please contact our **Customer Service Team on 13 24 99.**



Worth doing, worth Dulux®.



Dulux®

POWDER COATINGS

DURATEC® X15



Colours represented in this brochure are indicative only. They are as close to the actual product colours as modern printing techniques allow and have been matched to outdoor viewing. Colour appearance may vary according to light source.



Eternity® Citi Silver Pearl Matt
Duratec® X15 9007024Q



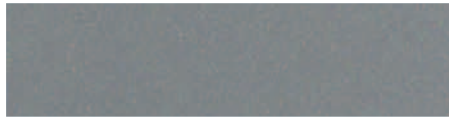
Eternity® Star Pearl Flat
Duratec® X15 9007005F



Eternity® Silver Kinetic Satin
Duratec® X15 9007160K



Eternity® Natural Pearl Matt
Duratec® X15 90089119



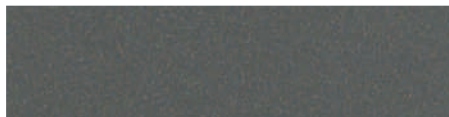
Eternity® Pewter Pearl Satin
Duratec® X15 90088396



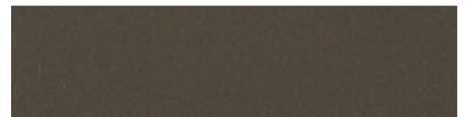
Eternity® Nickel Pearl Matt
Duratec® X15 90088395



Eternity® Linen Pearl Satin
Duratec® X15 9001138Q



Eternity® Titanium Pearl Satin
Duratec® X15 90087728



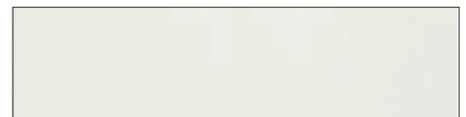
Eternity® Bronze Pearl Satin
Duratec® X15 90088393



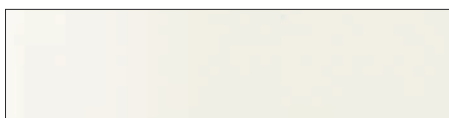
Eternity® Charcoal Pearl Satin
Duratec® X15 90088394



Zeus® White Gloss
Duratec® X15 9001110G



Zeus® Talc Satin
Duratec® X15 90084682



Zeus® Chalk USA Gloss
Duratec® X15 90073713



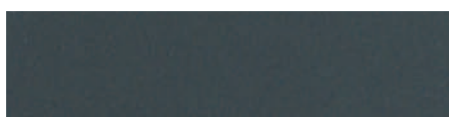
Zeus® Lunar Grey Matt
Duratec X15® 90088417



Zeus® Silver Grey Matt
Duratec® X15 90051272



Zeus® Grey Satin
Duratec® X15 90088416



Zeus® Dark Grey Matt
Duratec® X15 90051275



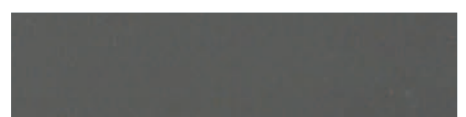
Zeus® Charcoal Satin
Duratec® X15 90087732



Zeus® Lunar Eclipse Satin
Duratec® X15 90087734



Zeus® Black Matt
Duratec® X15 90088702



Zeus® Timberland Satin
Duratec® X15 90073155

Dulux®

POWDER COATINGS

AUSTRALIA

Phone 13 24 99

Fax 1800 804 649

www.duluxpowders.com.au

Duratec®, Eternity®, CustomColour®, Dulux®, Pandemonium®, Zeus®, Lunar®, Eternity® and Worth doing, worth Dulux® are trade marks of DuluxGroup (Australia) Pty Ltd.

Any advice, recommendation, information, assistance or service provided by DuluxGroup (Australia) Pty Ltd in relation to goods manufactured by it or their use and application is given in good faith and is believed by DuluxGroup (Australia) Pty Ltd to be appropriate and reliable.

However, any advice, recommendation, information, assistance or service provided by DuluxGroup (Australia) Pty Ltd is provided without liability or responsibility PROVIDED THAT the foregoing shall not exclude, limit, restrict or modify the rights entitlements and remedies conferred upon any reason, or liabilities imposed by any DuluxGroup (Australia) Pty Ltd by any condition or warranty imposed by a Commonwealth, State or Territory Act or ordinance rendering void or prohibiting such exclusion, limitation, restriction or modification.

The images shown in this brochure are examples of where Dulux Powder Coatings can and have been used.

The information on this brochure is correct at the time of print.

©Copyright 2011 DuluxGroup (Australia) Pty Ltd



Worth doing, worth Dulux®.